

[Monday, 1PM ET: Top Trading Experts Discuss This Report! Click Here To Learn More.](#)

## Question #1. Which direction do you think the S&P500 index will move from this coming Monday's open to Friday's close (July 27th-31st)?

*(The order of possible responses to this question on the survey were randomized for each viewer.)*

Higher: 55.6%

Lower: 44.4%

Higher/Lower Difference: 11.1%

## Question #2. Rate your confidence in your answer to Question #2 by estimating the probability you have correctly predicted next week's market move.

Average of All Responses: 68.9%

Average For "Higher" Responses: 64.5%

Average For "Lower" Responses: 74.4%

Higher/Lower Difference: -9.9%

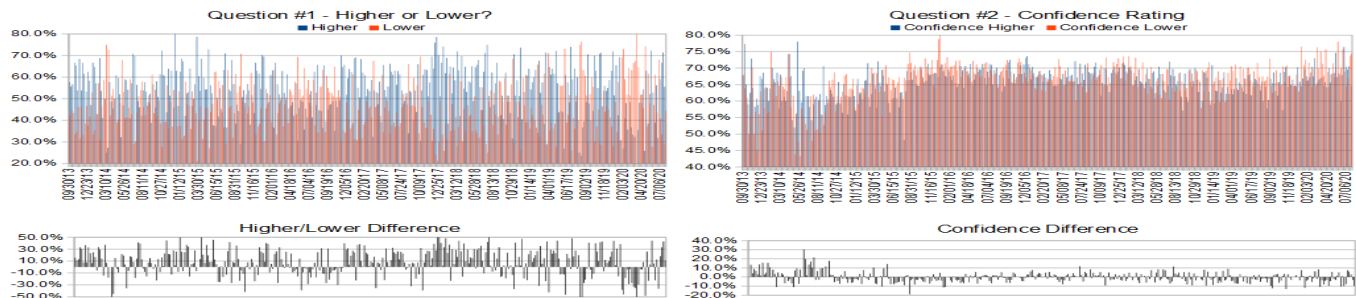
**Responses Submitted This Week: 18**

**52-Week Average Number of Responses: 27.8**

## TimingResearch Crowd Forecast Prediction: 53% Chance Higher

*This prediction is an attempt by the editor of this newsletter to use the full 6+ year history of data collected from this project to forecast a probability estimate for whether this week's sentiment is going to be correct and ultimately what the markets will do this coming week.*

Details: Last week's majority sentiment from the survey was 71.4% predicting Higher, and the Crowd Forecast Indicator prediction was 55% chance Higher; the S&P500 closed 0.27% Lower for the week. This week's majority sentiment from the survey is 55.6% predicting Higher but with a greater average confidence from those who are predicting Lower. Similar conditions have occurred 45 times in the previous 356 weeks, with the majority sentiment (Higher) being correct 53% of the time and with an average S&P500 move of 0.05% Higher for the week. Based on that history, the TimingResearch Crowd Forecast Indicator is forecasting a 53% Chance that the S&P500 is going to move Higher this coming week.



Raw Data Page (raw data files include full history spreadsheet and the above charts):  
[TimingResearch.com/data](https://TimingResearch.com/data).

# TimingResearch Crowd Forecast News Report #357 (07/27/2020) - Page 2/6

[Monday, 1PM ET: Top Trading Experts Discuss This Report! Click Here To Learn More.](#)

**Full Weekly Results** (full version of this chart available in the [raw data](#) spreadsheet for this week, "Date" field below lists the Monday of the week being predicted).

**Overall Sentiment All-Time "Correct" Percentage: 52.6%**

**Overall Sentiment 52-Week "Correct" Percentage: 56.9%**

**Overall Sentiment 12-Week "Correct" Percentage: 36.4%**

Only the previous 52 weeks of data are shown below, please [download the raw data](#) to see the full range of past data.

306	08/05/19	25.0%	75.0%	-50.0%	64.5%	60.0%	66.0%	-6.0%	Lower	67%	Higher	Higher	No	0	1	51.7%	2,898.07	2,918.65	20.58	0.71%
307	08/12/19	23.5%	76.5%	-52.9%	65.9%	64.4%	66.4%	-2.0%	Lower	68%	Higher	Lower	Yes	1	0	51.8%	2,907.07	2,888.68	-18.39	-0.63%
308	08/19/19	36.7%	63.3%	-26.7%	63.8%	57.7%	67.4%	-9.6%	Lower	65%	Higher	Lower	Yes	1	0	52.0%	2,913.48	2,847.11	-66.37	-2.28%
309	08/26/19	39.5%	60.5%	-21.1%	67.9%	60.3%	72.8%	-12.5%	Lower	62%	Higher	Higher	No	0	1	51.8%	2,866.70	2,926.46	59.76	2.08%
310	09/02/19	48.5%	51.5%	-3.0%	62.2%	66.8%	64.6%	2.2%	Lower	62%	Higher	Higher	No	0	1	51.6%	2,909.01	2,978.71	69.70	2.40%
311	09/09/19	70.6%	29.4%	41.2%	64.6%	65.4%	62.5%	2.9%	Higher	60%	Higher	Higher	Yes	1	1	51.8%	2,988.43	3,007.39	18.96	0.63%
312	09/16/19	47.8%	52.2%	-4.3%	67.0%	68.6%	65.4%	3.2%	Lower	55%	Higher	Lower	Yes	1	0	51.9%	2,996.41	2,992.07	-4.34	-0.14%
313	09/23/19	40.0%	60.0%	-20.0%	66.8%	63.0%	69.3%	-6.3%	Lower	72%	Higher	Lower	Yes	1	0	52.1%	2,983.50	2,961.79	-21.71	-0.73%
314	09/30/19	44.4%	55.6%	-11.1%	63.9%	61.7%	65.7%	-4.0%	Lower	55%	Higher	Lower	Yes	1	0	52.3%	2,967.07	2,952.01	-15.06	-0.51%
315	10/07/19	70.0%	30.0%	40.0%	65.3%	65.7%	64.4%	1.3%	Higher	60%	Higher	Higher	Yes	1	1	52.4%	2,944.23	2,970.27	26.04	0.88%
316	10/14/19	63.0%	37.0%	25.9%	67.2%	68.5%	65.0%	3.5%	Higher	61%	Higher	Higher	Yes	1	1	52.6%	2,965.81	2,986.20	20.39	0.69%
317	10/21/19	55.0%	45.0%	10.0%	63.3%	57.3%	70.6%	-13.3%	Higher	58%	Higher	Higher	Yes	1	1	52.7%	2,996.48	3,022.55	26.07	0.87%
318	10/28/19	70.8%	29.2%	41.7%	67.9%	68.8%	65.7%	3.1%	Higher	64%	Higher	Higher	Yes	1	1	52.9%	3,032.12	3,066.91	34.79	1.15%
319	11/04/19	71.4%	28.6%	42.9%	70.5%	70.3%	70.8%	-0.5%	Higher	59%	Higher	Higher	Yes	1	1	53.0%	3,078.96	3,093.08	14.12	0.46%
320	11/11/19	46.4%	53.6%	-7.1%	65.9%	64.3%	67.5%	-3.2%	Lower	62%	Higher	Higher	No	0	1	52.8%	3,080.33	3,120.46	40.13	1.30%
321	11/18/19	56.0%	44.0%	12.0%	67.6%	67.7%	67.7%	-0.2%	Higher	56%	Higher	Lower	No	0	0	52.7%	3,117.91	3,110.29	-7.62	-0.24%
322	11/25/19	53.6%	46.4%	7.1%	64.8%	65.0%	64.6%	0.4%	Higher	70%	Higher	Higher	Yes	1	1	52.8%	3,117.44	3,140.98	23.54	0.76%
323	12/02/19	55.0%	45.0%	10.0%	65.5%	66.5%	64.5%	2.0%	Higher	60%	Higher	Higher	Yes	1	1	53.0%	3,143.85	3,145.91	2.06	0.07%
324	12/09/19	58.6%	41.4%	17.2%	64.7%	64.7%	64.6%	0.1%	Higher	60%	Higher	Higher	Yes	1	1	53.1%	3,141.86	3,168.80	26.94	0.86%
325	12/16/19	63.0%	37.0%	25.9%	65.7%	64.4%	68.0%	-3.6%	Higher	54%	Higher	Higher	Yes	1	1	53.3%	3,183.63	3,221.22	37.59	1.18%
326	12/23/19	72.0%	28.0%	44.0%	68.2%	70.3%	62.9%	7.4%	Higher	62%	Higher	Higher	Yes	1	1	53.4%	3,228.05	3,240.02	11.97	0.43%
327	12/30/19	51.5%	48.5%	3.0%	65.3%	65.9%	64.7%	1.2%	Higher	64%	Higher	Lower	No	0	0	53.3%	3,240.09	3,234.85	-5.24	-0.16%
328	01/06/20	65.5%	34.5%	31.0%	68.6%	64.5%	76.5%	-12.0%	Higher	52%	Higher	Higher	Yes	1	1	53.4%	3,217.55	3,265.35	47.80	1.49%
329	01/13/20	42.3%	57.7%	-15.4%	69.3%	66.8%	70.9%	-4.1%	Lower	65%	Higher	Higher	No	0	1	53.2%	3,271.13	3,329.62	58.49	1.79%
330	01/20/20	69.2%	30.8%	38.5%	70.5%	69.6%	72.5%	-2.9%	Higher	59%	Higher	Lower	No	0	0	53.1%	3,321.03	3,295.47	-25.56	-0.77%
331	01/27/20	30.8%	69.2%	-38.5%	66.5%	67.5%	66.1%	1.4%	Lower	77%	Higher	Lower	Yes	1	0	53.2%	3,247.16	3,225.52	-21.64	-0.67%
332	02/03/20	26.9%	73.1%	-46.2%	70.0%	66.3%	71.7%	-5.4%	Lower	65%	Higher	Higher	No	0	1	53.0%	3,235.66	3,327.71	92.05	2.84%
333	02/10/20	40.9%	59.1%	-18.2%	68.1%	67.2%	68.7%	-1.5%	Lower	58%	Higher	Higher	No	0	1	52.9%	3,318.28	3,380.16	61.88	1.86%
334	02/17/20	48.0%	52.0%	-4.0%	67.2%	70.4%	64.2%	6.2%	Lower	60%	Higher	Lower	Yes	1	0	53.0%	3,369.04	3,337.75	-31.29	-0.93%
335	02/24/20	35.7%	64.3%	-28.6%	68.9%	67.5%	69.7%	-2.2%	Lower	59%	Higher	Lower	Yes	1	0	53.2%	3,257.61	2,954.22	-303.39	-9.31%
336	03/02/20	48.4%	51.6%	-3.2%	68.7%	73.0%	64.7%	8.3%	Lower	69%	Lower	Lower	Yes	1	0	53.3%	2,974.28	2,972.37	-1.91	-0.06%
337	03/09/20	36.7%	63.3%	-26.7%	72.3%	65.5%	76.3%	-10.9%	Lower	55%	Higher	Lower	Yes	1	0	53.5%	2,863.89	2,711.02	-152.87	-5.34%
338	03/16/20	33.3%	66.7%	-33.3%	68.8%	66.4%	70.0%	-3.6%	Lower	54%	Higher	Lower	Yes	1	0	53.6%	2,508.59	2,304.92	-203.67	-8.12%
339	03/23/20	32.4%	67.6%	-35.3%	72.4%	66.8%	75.0%	-8.2%	Lower	53%	Higher	Higher	No	0	1	53.4%	2,290.71	2,541.47	250.76	10.95%
340	03/30/20	18.9%	81.1%	-62.2%	70.5%	67.1%	71.3%	-4.2%	Lower	71%	Higher	Lower	Yes	1	0	53.6%	2,558.98	2,488.65	-70.33	-2.75%
341	04/06/20	35.5%	64.5%	-29.0%	66.6%	64.6%	67.8%	-3.2%	Lower	57%	Higher	Higher	No	0	1	53.4%	2,578.28	2,789.82	211.54	8.20%
342	04/13/20	48.1%	51.9%	-3.7%	70.9%	65.8%	75.7%	-9.9%	Lower	67%	Higher	Higher	No	0	1	53.3%	2,782.46	2,874.56	92.10	3.31%
343	04/20/20	48.0%	52.0%	-4.0%	66.4%	64.2%	68.8%	-4.5%	Lower	68%	Higher	Lower	Yes	1	0	53.4%	2,845.62	2,836.74	-8.88	-0.31%
344	04/27/20	54.3%	45.7%	8.6%	67.4%	70.0%	64.4%	5.6%	Higher	59%	Higher	Lower	No	0	0	53.2%	2,854.65	2,830.71	-23.94	-0.84%
345	05/04/20	25.8%	74.2%	-48.4%	67.4%	65.6%	68.0%	-2.4%	Lower	54%	Higher	Higher	No	0	1	53.1%	2,815.01	2,929.80	114.79	4.08%
346	05/11/20	63.0%	37.0%	25.9%	69.4%	68.2%	71.5%	-3.3%	Higher	56%	Higher	Lower	No	0	0	52.9%	2,915.46	2,863.70	-51.76	-1.78%
347	05/18/20	38.5%	61.5%	-23.1%	67.7%	68.5%	67.2%	1.3%	Lower	57%	Higher	Higher	No	0	1	52.8%	2,913.86	2,955.45	41.59	1.43%
348	05/25/20	52.2%	47.8%	4.3%	72.2%	74.6%	69.6%	5.0%	Higher	57%	Higher	Higher	Yes	1	1	52.9%	3,004.08	3,044.31	40.23	1.34%
349	06/01/20	72.2%	27.8%	44.4%	70.3%	67.3%	78.0%	-10.7%	Higher	54%	Higher	Higher	Yes	1	1	53.0%	3,038.78	3,193.93	155.15	5.11%
350	06/08/20	52.9%	47.1%	5.9%	67.9%	68.3%	67.5%	0.8%	Higher	60%	Higher	Lower	No	0	0	52.9%	3,199.92	3,041.31	-158.61	-4.96%
351	06/15/20	38.9%	61.1%	-22.2%	66.1%	60.0%	70.0%	-10.0%	Lower	57%	Higher	Higher	No	0	1	52.7%	2,993.76	3,097.74	103.98	3.47%
352	06/22/20	56.3%	43.8%	12.5%	71.3%	67.8%	75.7%	-7.9%	Higher	56%	Higher	Lower	No	0	0	52.6%	3,094.42	3,009.05	-85.37	-2.76%
353	06/29/20	31.8%	68.2%	-36.4%	71.4%	76.4%	68.9%	7.5%	Lower	70%	Higher	Higher	No	0	1	52.4%	3,018.59	3,130.01	111.42	3.69%
354	07/06/20	59.1%	40.9%	18.2%	68.0%	70.4%	64.4%	5.9%	Higher	62%	Higher	Higher	Yes	1	1	52.6%	3,155.29	3,185.04	29.75	0.94%
355	07/13/20	66.7%	33.3%	33.3%	68.6%	69.6%	66.7%	2.9%	Higher	63%	Higher	Higher	Yes	1	1	52.7%	3,205.08	3,224.73	19.65	0.61%
356	07/20/20	71.4%	28.6%	42.9%	71.4%	70.5%	73.8%	-3.3%	Higher	55%	Higher	Lower	No	0	0	52.6%	3,224.29	3,215.63	-8.66	-0.27%
357	07/27/20	55.6%	44.4%	11.1%	68.9%	64.5%	74.4%	-9.9%	Higher	53%	Higher	???	???	???	???	???	???	???	???	???

Weekly Reports Page: [TimingResearch.com/reports](#)

Raw Data Page: [TimingResearch.com/rawdata](#)

Current Survey Page: [TimingResearch.com/currentsurvey](#)

Any feedback: [TimingResearch.com/contact](#)

*NOTE: The following open-ended answers are solely the opinions of the anonymous respondents to this survey. Responses are mostly unedited, but some have been reformatted slightly for to make them easier to read. Some irrelevant responses (e.g. "none"), or anything obviously fake, or copy and pasted responses have been omitted. All-caps responses have been changed to all lowercase. All responses for each week, unedited, are available in the raw data spreadsheets at [TimingResearch.com/data](https://TimingResearch.com/data).*

**Question #3. For your answer to Question #1, please share what specific reason(s) you think the S&P500 will be heading the direction you chose.**

**“Higher” Respondent Answers:**

- COT positive more buys than sells
- Earnings reports China and it's bad politics won't stop American businesses
- Positive earnings outlook
- Positive bias, expectations of continued injects of monetary and fiscal stimulus, retail participation.
- Buing opportunities and new virus medicals
- The trend is still up

**“Lower” Respondent Answers:**

- By last veek candles, maybe to 3000 USD price.
- The relentless growth of COVID cases and deaths, China issues, bad poll numbers for Trump, market overbought all contribute.
- Rally needs a rest
- The chart looks similar to what it looked like in Feb (3rd week), when it was starting to turn down into a sizable drop.
- A. Market is totally overbought, especially tech B. Bad news continues - Civil unrest, China conflict, continued pandemic
- USA & china trade conflict , Covid-19 and breaking below 16 of july low (3198) and next 28 june low ( 2994) further downward move on it is way , re daily chart.

### Question #4. What trading software/platform(s) do you use to execute your trades?

- Schwab StreetSmart Edge
- MT4 platform , i prefer simple trading platform as i am a software dump)
- E-Trade
- TOS
- IB, Fidessa
- Trade station.
- Think or Swim
- Fidelity & Infinity
- mt4

### Question #5. Additional Comments/Questions/Suggestions?

Thank you for all the feedback, feel free to [contact us](#) at any time with any other questions or comments.

- Viva standard & poor 500

## Standing Predictions

Below are some of the one-time prediction-type questions asked in previous weeks that have not been finalized yet or have been finalized recently. Suggest a future question [here](#).

**Week #283, 02/24/19 Report** - What year do you think recreational cannabis use will be federally legalized in the United States?

- 4%: 2019
- 40%: 2020
- 12%: 2021
- 20%: 2022
- 0%: 2023
- 8%: 2024
- 16%: After 2024 or Never